

At **Newport Landing Apartments**, experience stylish living. Within our community, you'll have access to top amenities and features including: a clubhouse, a state-of-the-art fitness center, and fireplaces. The team of leasing professionals will assist you in finding your perfect floorplan.

We offer 1, 2 and 3-bedroom apartment homes that provide spacious designs in Dallas, Texas.

Come experience a community that cares about where you live and offers superior customer service. Find your new home at Newport Landing Apartments. Contact or drop by to schedule a tour!

INTERIORS

- All Electric Kitchen Includes:
- Dishwasher
 - Disposal
 - Stove
 - Oven
 - Refrigerator
 - Microwave
 - High Speed Internet Access
 - Washer/Dryer Connections
 - Cable Ready
 - Storage Units
 - Fireplace
 - Walk-In Closets
 - Wheelchair Accessible (Rooms)

*Available in select homes

COMMUNITY AMENITIES

- Sparkling Swimming Pool
- Clubhouse
- Business Center
- Fitness Center
- Sauna
- Playground
- Basketball Court
- Tennis Court
- On-Site Laundry Facilities
- Gated Community
- Pet Play Area
- Professionally Landscaped Grounds
- On-Site Maintenance
- On-Site Management
- Pet Friendly**

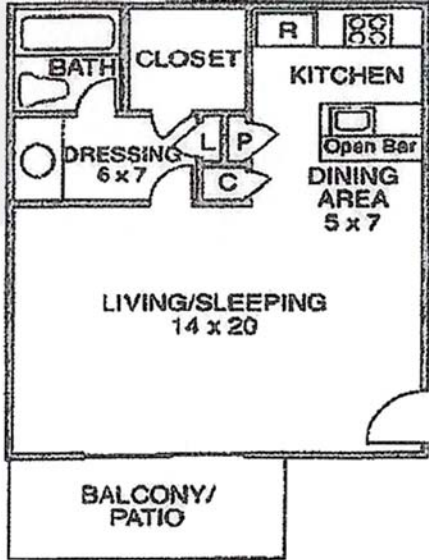
FLOOR PLAN TYPES

- Efficiency / 1 Bath 500 Sq. Ft.*
- 1 Bed / 1 Bath 697 Sq. Ft.*
- 2 Bed / 1 Bath 871 Sq. Ft.*
- 2 Bed / 2 Bath 965 Sq. Ft.*
- 2 Bed / 1.5 Bath 997 Sq. Ft.*
- 3 Bed / 2 Bath 1,232 Sq. Ft.*

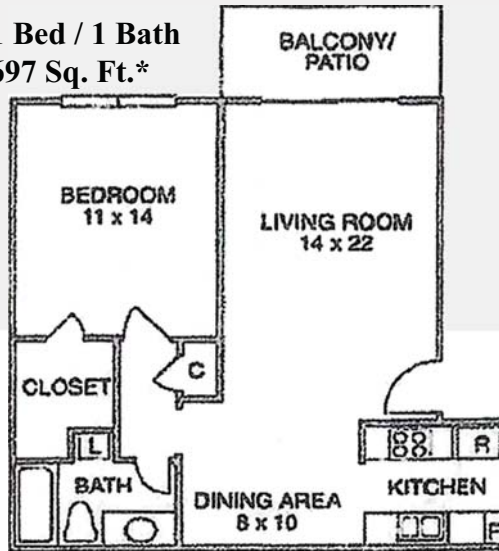


FLOOR PLAN TYPES

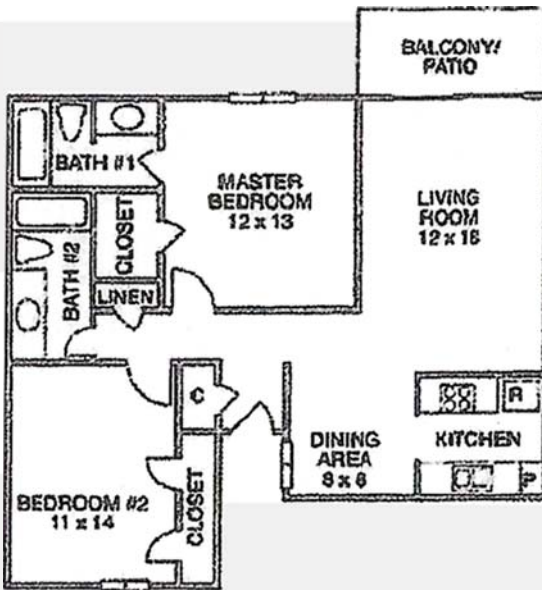
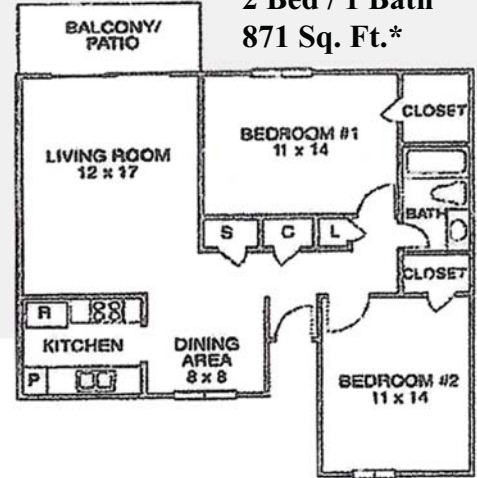
Efficiency / 1 Bath
500 Sq. Ft.*



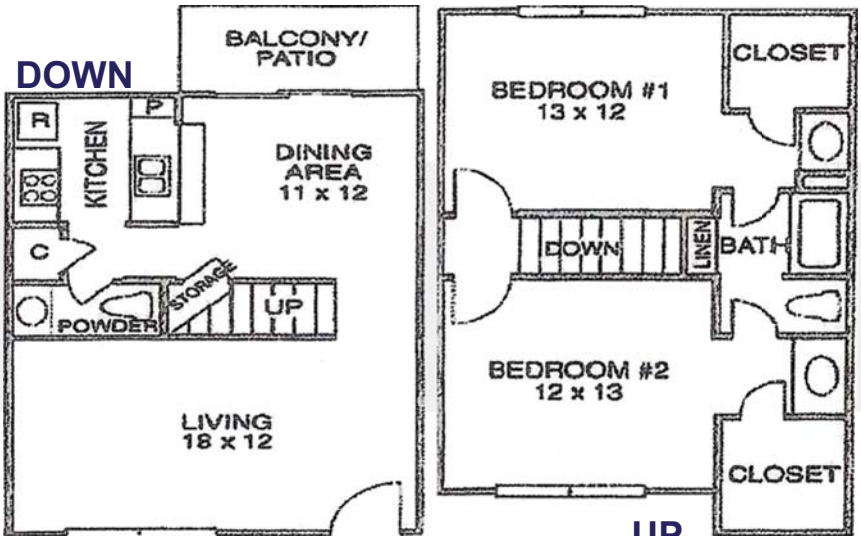
1 Bed / 1 Bath
697 Sq. Ft.*



2 Bed / 1 Bath
871 Sq. Ft.*

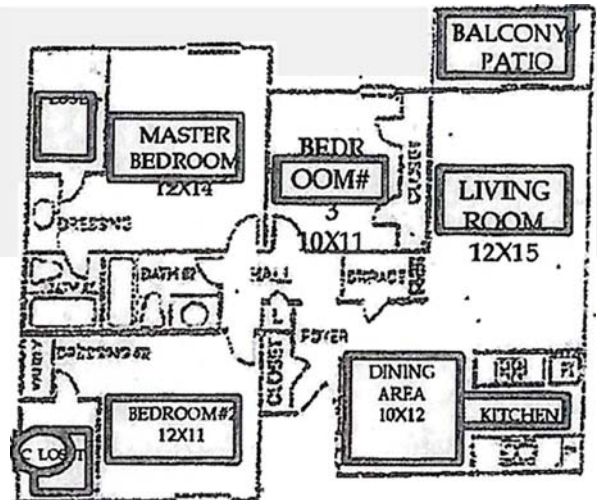


2 Bed / 2 Bath 965 Sq. Ft.*



2 Bed / 2 Bath 997 Sq. Ft.*

3 Bed / 2 Bath
1,232 Sq. Ft.*



*Approximate Square Footage Only. Renderings are an artist's conception and are intended only as a general reference. Features, materials, finishes, and layout of subject units may be different than shown.

